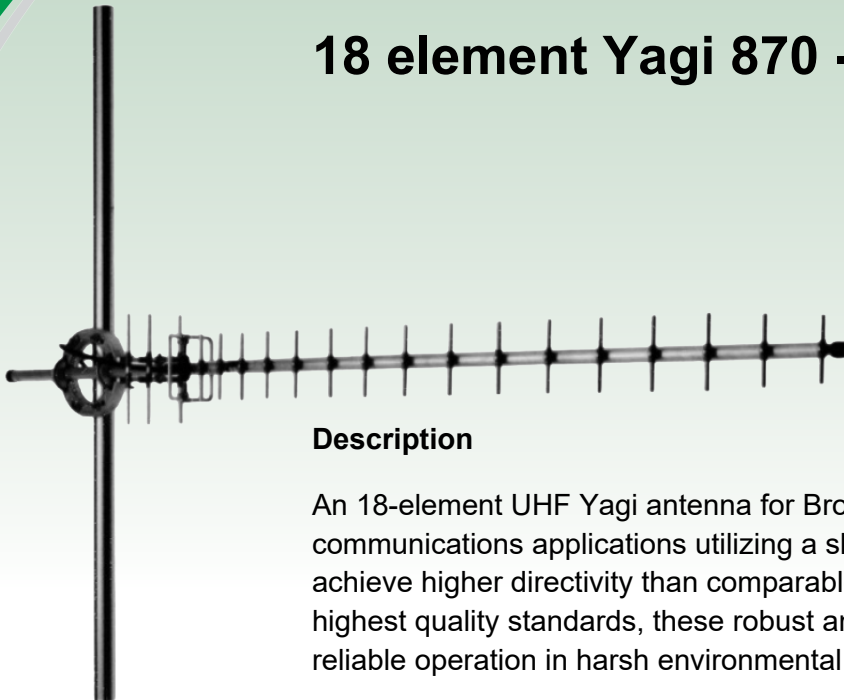




# 18 element Yagi 870 - 960 MHz

Model #: 104A-YA18-14  
DS040616



## Description

An 18-element UHF Yagi antenna for Broadcast, TETRA and Cellular communications applications utilizing a slot radiator feed design to achieve higher directivity than comparable models. Produced to the highest quality standards, these robust antenna designs will ensure reliable operation in harsh environmental conditions.

## Electrical Specifications

Parameter	Value
Model	<b>104-YA18-14</b>
Frequency	870 - 960 MHz
Max. Input Power	150 W
Polarisation	Linear (Vertical or Horizontal)
3 dB Beamwidth, E-Plane	23°
3 dB Beamwidth, H-Plane	25°
Impedance	50 $\Omega$
Gain	14.4 dBd (16.6 dBi)
VSWR	< 1.5:1
Front-To-Back Ratio	> 20 dB
Antistatic Protection	All metal parts DC-grounded (Connector shows a DC-short)

## Mechanical Specifications

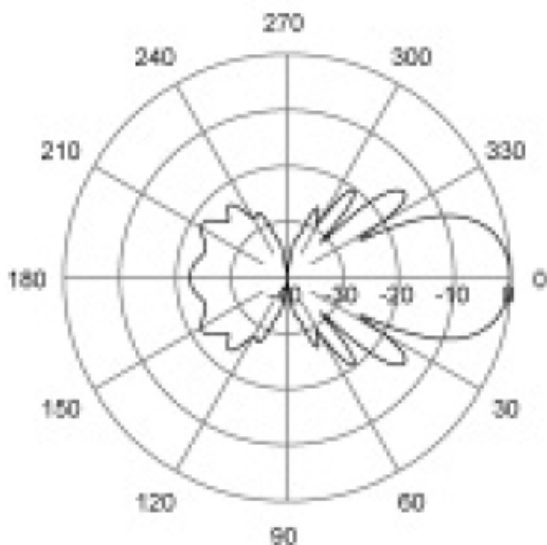
Parameter	Value
Connection(s)	N(f) on 3m RG213/U cable
Materials	Boom, 25 mm dia., aluminum Elements, 10 mm dia., aluminum balun, slot radiator
Length	Approx. 2000 mm / 78.74 in.
Wind Load	135 N (160 km/h)
Weight	Approx. 2.7 kg / 5.95 lb.



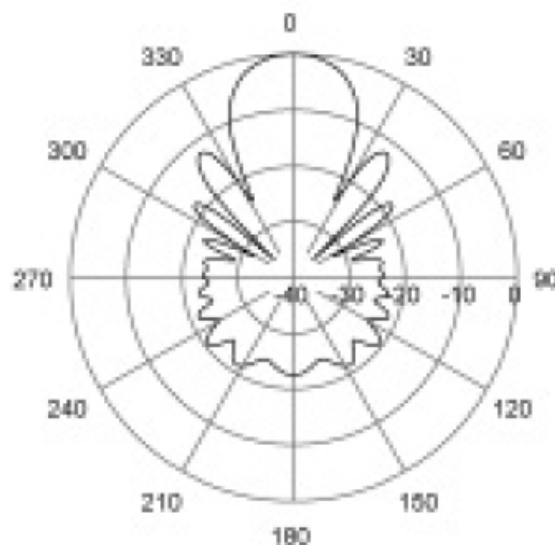
## Accessories

Description	Part Number
Cross Clamp	91-00-104A-C2
Increasing sleeve 1"-1-29/32"	91-00-104A-SL2
Pressed steel cross clamp 2" x 1-1/4"	91-00-104A-21
Fixed norstel / coupler clamp (cross clamp)	91-00-104A-N

## Radiation Patterns



E-Plane | 915 MHz



H-Plane | 915 MHz